

# PLANNING SHEET FOR TEE TYPE MULTIPLE OUTLET NOZZLES

Tee nozzles are available in a wide variety of designs, number of outlets, spacing, etc.. Some configurations can be considered as standard, but in many cases, it is advantageous to use a tee nozzle made to exactly meet your requirements. Our manufacturing methods enable us to make fast delivery of all special nozzles at a relatively low cost.

Standard nozzles have aluminum bodies, stainless steel inserts, and brass lock nuts. Stainless steel is available. Nozzles may be used with both hot melt and cold adhesives. For best results, multi orifice nozzles should be kept as close as possible to the substrate.

To select a number for a special nozzle, proceed as shown below. The example assumes ordering a Tee type nozzle, 90 degree outlet, offset left, 1/2-24 lock ring, 4 outlets, first outlet 5/8" from center, subsequent outlets 3/8" apart, orifice .018.

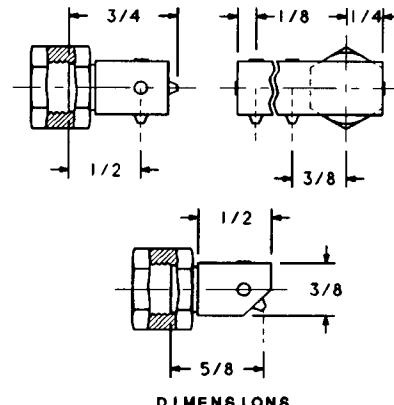
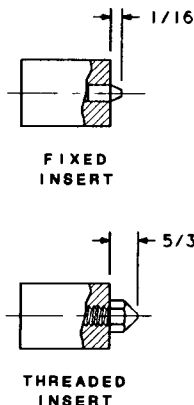
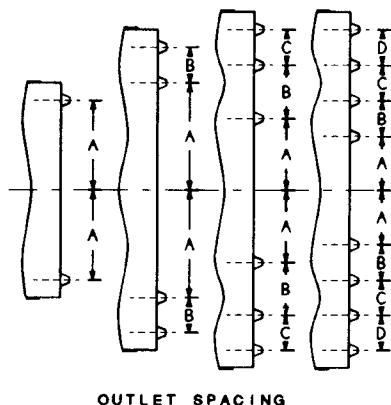
### SELECTION PROCEDURE

1. Select basic number from description chart
2. Specify number of outlets
3. Select lock ring thread size from chart
4. Select spacing from spacing chart
5. Add orifice size required
6. Order by this number

### EXAMPLE

4735  
 47354  
 473542  
 473542-A5/8-B3/8-C3/8-D3/8  
 473542-A5/8-B3/8-C3/8-D3/8-018  
 473542-A5/8-B3/8-C3/8-D3/8-018

LOCKNUTS	
THREAD	6 <sup>TH</sup> DIGIT
3/8-24	1
1/2-24	2
1/2-28	3
7/16-20	4
11/16-16	5
OTHER	6



### NOZZLE TYPE AND DESCRIPTION

<p><b>FORWARD SYMMETRICAL</b>                      Basic No. Fixed Insert - 4731                      Basic No. Threaded Insert - 4741</p>	<p><b>FORWARD OFFSET, LEFT</b>                      Basic No. Fixed Inert - 4732                      Basic No. Threaded Insert - 4742</p>	<p><b>FORWARD OFFSET, RIGHT</b>                      Basic No. Fixed Inert - 4733                      Basic No. Threaded Insert - 4743</p>
<p><b>90° SYMMETRICAL</b>                      Basic No. Fixed Inert - 4734                      Basic No. Threaded Insert - 4744</p>	<p><b>90° OFFSET LEFT</b>                      Basic No. Fixed Inert - 4735                      Basic No. Threaded Insert - 4745</p>	<p><b>90° OFFSET RIGHT</b>                      Basic No. Fixed Inert - 4736                      Basic No. Threaded Insert - 4746</p>
<p><b>45° SYMMETRICAL</b>                      Basic No. Fixed Inert - 4737                      Basic No. Threaded Insert - 4747</p>	<p><b>45° OFFSET LEFT</b>                      Basic No. Fixed Inert - 4738                      Basic No. Threaded Insert - 4748</p>	<p><b>45° OFFSET RIGHT</b>                      Basic No. Fixed Inert - 4739                      Basic No. Threaded Insert - 4749</p>